

T790

1CH DASHCAM User Guide ver. 1.0

QVIA Dash Cam

- ※ Functions in the manual may differ depending on the software version.
- ※ Note that this device is for sales outside Korea. Thus language can not be set in Korean.
- ※ The Qvia application can be found on the Google Play Store and the App Store.
- ※ The Qvia application can be used with Android 4.0 or later, iOS 5.0 or later.
- ※ Content of this manual regarding Qvia Application may differ from the one installed depending on the application version or the model of the device.
- ※ Wi-Fi connection could be interrupted depending on wireless environment and/or type of smartphone.
- ※ With Wi-Fi connected, recorded videos will be saved with lower footage quality (3Mbps)
- ※ Wi-Fi will automatically be disconnected for safety, if the vehicle speed exceeds the set limit of 10km/h.
- ※ Use genuine QVIA memory card provided by the manufacturer, and format your microSD card once every fortnight. (for 16GB)

Thank you for purchasing QVIA Dash Camera.

This manual is for the users of the T790 model.
There may be some technical & editorial errors and omissions.
You can download the latest and updated manual & firmware at our website www.qvia1.com.

■ Read carefully before using this product ■

- ※ This manual should be reviewed and retained for future reference.
- ※ Qrontech reserves all rights to this manual in accordance with the copyright law.
- ※ Content of this manual is subject to change without notice to ensure quality control.
- ※ Device functionality may differ depending on firmware versions.
- ※ This device was designed as a guide for safe driving. In the event of an accident, the driver must take full responsibility. Please use this product accordingly.

■ Scope of guarantee and responsibility ■

- ※ This device is an equipment for recording videos and sounds to provide visual proof of a vehicular accident, but we do not guarantee that it will record all accident videos and sounds.
- ※ We will not be held responsible for any damages caused by malfunction of this device data loss, or other damages related to this device.
- ※ In general, the memory card lifespan is about 6 months and there may be data loss due to static electricity or external voltage existing in the surrounding environment. For this reason, it is highly recommended to copy and save important data to other media devices. (hard disk, CD, portable memory etc.).
- ※ The memory card may obtain corrupted videos (omissions in recording, image cuts, omissions due to changes in frame rates & other recording defects) due to a decrease in reading/writing speed.
For the best results, please use a genuine Qvia microSD card and format it once every fortnight.
- ※ This device is an auxiliary device to record driving videos. Please use this device for reference purposes only.
There may be times when recording is unstable due to various driving conditions.
- ※ We will not be held responsible for any damages related to engine output if the user chooses to record in parking mode without any extra external battery.

CONTENTS

1. Instructions For Use

1-1. Precautions and Notices	4
1-2. Installation	6
1-3. GPS	6
1-4. Memory card	7

2. Features

8

3. Components

3-1. Package Guide	10
3-2. Names & Functions of each part	11

4. Installation

4-1. Precautions	12
4-2. Step-by-Step Installation	12
4-3. Memory Card Usage	13
4-4. How to hardwire Continuous Power Cable	14

5. Product Usage

5-1. Basic Operation Guide	17
5-2. Getting Started with the Qvia App	18
5-3. Connecting to the Qvia App	18
5-4. How to use the Qvia App	19
5-5. How to Upgrade Firmware on Qvia App	22
5-6. Viewer	23

6. Specification & Customer Service

6-1. Specifications	27
6-2. Memo	28
6-3. Quality Assurance	31

1. Instructions For Use

1-1. Precautions and Notices

1. Do not expose the device to direct sunlight or cold weather for extended periods of time.

Direct Exposures to sunlight and extreme temperatures may damage the device. When not in use, storage temperatures should also be considered. Note that the exterior of the device may change in color if exposed to harsh sunlight for a prolonged period of time.

2. Do not attempt to service the device.

Do not attempt to disassemble, modify, or repair the product. Warranty cover will be void if a repair has been attempted by the user or anyone unauthorized.

3. Do not dismantle or alter the device accessories.

Modifying or cutting power cable can lead to damages to the device or the vehicle. We are not responsible for any damages caused by such modifications.

4. Do not expose the device to liquids.

Please note this device is not waterproof and exposure to liquids and foreign substances may cause a device malfunction, short circuit, and/or fire. Be cautious when cleaning the device using a soft and dry cloth.

5. Do not expose the device to heavy impacts.

Excessive impacts to this device can cause malfunction. Handle the device with care.

6. Only use manufacturer-approved power cable and accessories.

Any damages to the device/vehicle incurred as a result of using accessories incompatible with the device will not be covered under the manufacturer's warranty

7. Do not operate the device for extended periods of time while the vehicle is not running.

Excessive use of the device while vehicle is off can cause drainage to the vehicle's battery.

8. Extreme changes in lighting conditions can affect video quality.

Video quality can be affected in extreme dark/light areas and conditions. Most notably when entering/exiting a tunnel or parking garage.

9. Data may not be recorded if an impact detected is too subtle.

In extreme cases, the device may not record data during an accident due to possible low impact forces. In addition, a high force impact may disrupt power to the device and data may be lost.

10. Do not disconnect the power source while the device is turned-on.

Disconnecting the power source may cause the device to malfunction. Please use only the recommended voltage for power connection.

11. Some PCs may not support Qvia Viewer or there may be some disconnections in voice/image depending on the PC's specifications.

12. AE operations at night may vary depending on the color of the vehicle(black, red) reflecting less light.

13. There may be frame omissions due to rapid AE operational changes in low light areas. Please adjust the angle of the camera lens if AE operation malfunctions.

14. Videos may contain noises if recorded in poor lighting environments. Videos can shake if recorded when stopping or parking the vehicle.

15. In the event of a sudden frame change or switching between parking & driving modes, there may be a loss of data.

16. Motion detectors may malfunction in the event of an extreme changes in lighting conditions surrounding the vehicle.

17. The motion detection function may not operate properly when parking in environments with poor lighting due to noise and vehicle security LED(s).

18. The left and right side of video footage may differ in quality due to characteristics of the wide-angle lens.

19. Traffic lights may appear to be flickering due to its location or signal frequency.

20. Please ensure all accessories are connected to the device to avoid data loss.

21. We will not be held responsible for any damages related to engine output if user records in parking mode without any extra external battery.

22. The camera cannot be connected via Wi-Fi more than one device at the same time.

23. For playback of recorded videos using Wi-Fi, Wi-Fi signal may vary according to the transmission power and the types of smartphones.

24. The range of Wi-Fi signal may vary.

25. If you suspect any malfunction, stop using the device and contact our CS center or your local distributor.

■ 1–2. Installation ■

1. Keep the surrounding of the device clear.

Please ensure the surrounding area is clutter-free, specially on the dashboard to avoid reflections in the windshield that may reduce the video/audio quality.

2. Ensure the camera lens is clean at all times.
3. Do not attempt to operate or install the device while driving.

For your safety, do not attempt to operate or install the device while driving to avoid possible accidents.

4. Please keep the device securely mounted at all times.

Improper installation of the device can result in a fall or malfunction, which can lead to breakdown or driving interruption.

5. Video footage can be blurry or distorted in a vehicle with excessively tinted windshield glass.
6. Install this device at the point as furthest away from the antenna or receiver as possible.

The electromagnetic waves produced by the device may interfere with GPS signals.

■ 1–3. GPS ■

1. A typical GPS receiver achieves an accuracy of 15 meters. There may be conditions where GPS signals cannot be received depending on the driving environments such as tunnels, underpasses, skyscrapers, and street lights which affect the accuracy level.
2. It may take some time to receive GPS signal for the first time after power is turned on depending on the weather or other factors.
3. External devices (electronic, toll device) and window tinting may affect GPS reception.
4. Driving speed may vary (range of 1–30 km/h) depending on where the vehicle is parked.
5. GPS information may be lost if the device is turned off.

■ 1-4. Memory Card ■

1. Do not remove the memory card by force while the device is in recording mode.
Be sure to turn off the device before removing the memory card. Removing the memory card with the device running may damage the video file or cause an operational error of the memory card.
2. Format your micro SD card once every fortnight.(for 16GB)
Repetitive writing and deleting of a memory card can cause damage to the card itself as well as the files stored in it.
Therefore, periodic formatting can prevent the card or files from such damages. In addition, the longest lifespan of a memory card is 6 months and the manufacturer is not responsible for recording problems that take place due to a prolonged use of a memory card past the lifespan.
3. Use the memory card supplied by the manufacturer.
We shall not be responsible for any problems caused by using a memory card not provided by the manufacturer.
4. Handle with care when inserting and removing the memory card to avoid burns.
The memory card operates at very high temperatures, so you must be careful of handling the card.
5. Operating temperatures may vary depending on the performance of the memory card in use.
6. Be sure to backup your recorded videos using an extra storage device. (PC, external HDD, etc.).
A backup of the memory card data using an external storage device can prevent the loss of important data.
7. Be sure to format the microSD card when changing mode setting on Qvia viewer.
8. After formatting memory card, the latest settings will be automatically applied to the dash cam. No firmware or configuration file is required.
As the latest set value is saved on the device, it is automatically applied to the formatted memory card.
9. Please format the memory card without removing it from the device. You can format the card on the formatting menu right from the device.
10. Be sure to insert a microSD card into the device.
Without a microSD card, recordings cannot be saved.
11. When formatting on a PC, we recommend that users opt for a full format option rather than quick format option.

2. Features

- ▶ High-clarity video quality
CMOS **Sony IMX322 Full HD** dedicated sensor
- ▶ Distortion-free recording with wide-angle lens
1920X1080p Full HD recording, wide screen at max. 30fps
- ▶ **Supports Wi-Fi (802.11b/g/n (2.4~2.4835GHz))**
- ▶ Equipped with car battery discharge prevention function
Multi-booting support (ON - ACC - OFF)
Leakage current 100uA or less
- ▶ Supports a variety of recording functions
 - Continuous recording: Continuously records 3-minute videos
 - Event recording: records before/after impact occurs for 30 seconds in total
 - Motion detection recording: 30-second recording before and after the motion is detected.
- ▶ Supports maximum memory capacity of **256G**
- ▶ Supports voice guidance in 21 languages (English, Korean, Russian, Chinese, French, European Spanish, Latin America Spanish, Arabic, Japanese, Thai, Vietnamese, German, Mogolian, Turkish, Italian, Hindi, Czech, Cantonese, Portuguese, Bahasa Indonesia, Bahasa Melayu)
- ▶ **Supports Dual Security LED**
- ▶ Stores **2 million pieces of driving information data**
- ▶ Supports Integrated GPS
- ▶ Operating temperature: -20°C~ 70°C
- ▶ Comes with a fixed-type dash cam mount (Easy-to-Install & Detachable)

▶ **Built-in microphone**

Records audio simultaneously

▶ **Direct memory card format**

Able to format the memory card directly from the device (refer to 11 page)

▶ **Built-in super capacitor**

An internal battery replacement is not necessary due to a built-in semi-permanent super capacitor which will write all files onto the microSD card before the device turns off

▶ **Video playback**

Video can be viewed from the PC & Mac using Qvia Viewer or other media players

▶ **Firmware upgrade support**

Firmware will be upgraded for improvement of performance and fixing errors

▶ **Configuration setting available**

Users are able to customize the device settings and a variety of functions including customized recording, directly from Qvia viewer

3. Components

3-1. Package Guide

<Bundled Accessories>



Camera



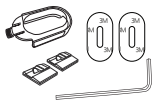
microSD card



Hard wire power cable



User's Guide



Fixed type bracket set



microSD Card adapter

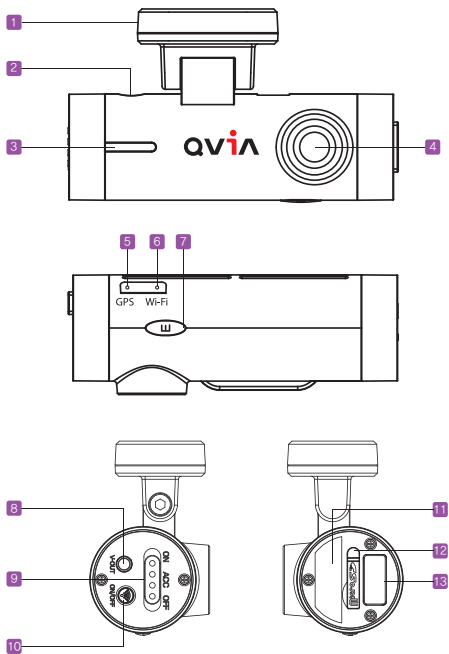
<Optional>



Cigar cable (optional)

- Please handle the components with care.
- Be sure to use genuine components provided by the manufacturer.

3-2. Names & Functions of Each Part



	Name	Function
1	Stand & GPS(Built-In)	Installed into vehicle & receives GPS info (only applies to device with GPS stand)
2	DC-IN	Supply power to dash cam through power connection
3	Security LED	Displays dash cam operating status, gives warning
4	Camera Lens	Video signal input (CMOS Digital Sensor)
5	LED for GPS	Displays GPS status
6	LED for Wi-Fi	Displays Wi-Fi status
7	Emergency Recording (E) Button	Manual recording when necessary (generate 30-second file in event folder)
8	V-OUT	Video-Out Port. Connect to a monitor to watch real-time video.
9	Power Switch	Dash cam power supply switch
10	Wi-Fi Button	Wi-Fi On/Off Button
11	S/N Label	Product name & product serial number
12	microSD Slot	Used to insert/remove microSD card
13	Wi-Fi	Wi-Fi Dongle

How to format microSD card from the camera

1. Restart the camera after inserting the microSD card
2. Press 'Emergency Recording (E) Button'(No.7 in the above table) and the Wi-Fi Button (No.10) at the same time. (listen to Voice Guidance)
3. Formatting starts when you press 'Emergency Recording (E) Button once again.

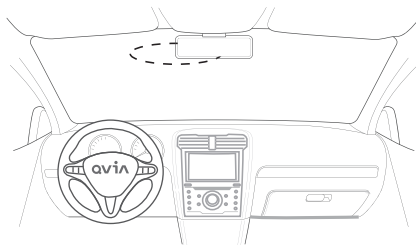
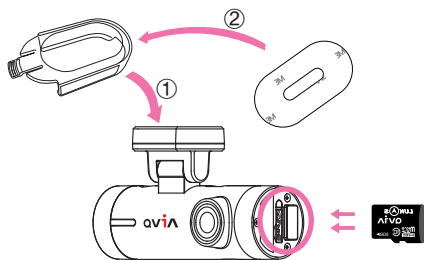
4. Installation

4-1. Precautions

- ※ Before installation, park your vehicle on flat ground where there is some light.
Turn off the engine and remove the key. (Be sure parking brake is ON)
- ※ Pick a spot for the device on the rear view mirror not blocking the driver's vision.
- ※ Do not install the device with the lens facing upwards or it may cause weak GPS signals and/or a continuous event recording.
- ※ Clean the windshield where the device will be installed.
- ※ Adjust camera lens angle, so that it shows approximately 40% of the car bonnet on the bottom of video footage.
 - If the lens is installed excessively facing downwards, it blocks traffic signs, keeping you from retrieving exact information.
 - When the lens is installed facing too high, the screen looks dark overall due to the bright sky.

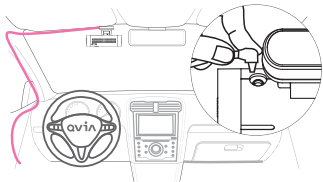
4-2. Step-by-Step Installation

- 1 Apply double-sided adhesive tape on the stand of the device.
 - ※ Check if a microSD card is inserted.
 - ※ Make sure Wi-Fi dongle is inserted into the main device.
- 2 Select a spot not blocking the driver's vision. Then, attach the device onto the windshield glass around the rear view mirror.
 - ※ Detaching and reattaching the adhesive tape causes the tape to lose its stickiness.

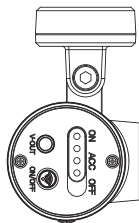


4-2. Step-by-Step Installation

- 3** After connecting power cable to the device, run the power cable along the windshield headliner all the way to the driver side A-pillar trim (as shown in the picture colored pink.)



- 4** After installation, turn on the engine first followed by switching on the power button(ACC or ON) of the device.



4-3. Memory Card Usage

- Video is recorded at 3-minute interval for continuous recording, 30-second interval for motion and event recording.
- The below table is based on FHD quality video and the micro SD card setting which is set to the following proportional storage assignment for different recording modes: continuous 70%, motion detection 20%, event 10%

1. microSD card usage time

	Always recording		Motion detection recording		Event recording	
	Total no. of files	Total usage time	Total no. of files	Total usage time	Total no. of files	Total usage time
16G	49	2h 27min	87	43min 30sec	43	21min 30sec
32G	101	5h 3min	177	1h 28min 30sec	88	44min
64G	204	10h 6min	356	2h 58min	178	1h 29min
128G	408	20h 12min	713	5h 56min 30sec	356	2h 58min
256G	821	41h 3min	1,436	11h 58min	718	5h 59min

※ The above table is based on the video quality of High mode(9M).

※ The total usage time above is an approximation. There may be some variation with actual recording time and the number of files stored depending on the user's environment.

4-4. How to hardwire Continuous Power Cable

1

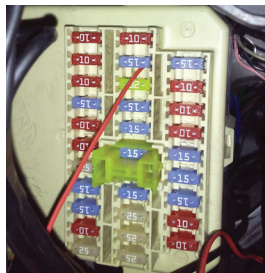


Before you open or work on a fuse box, be sure that your vehicle's ignition is turned off. Then, locate the fuse box and the chart that shows you what each fuse is for. Choose where to wire the continuous power cord and the ACC wire.

※ Use fuse tongs to easily insert and remove individual fuses.



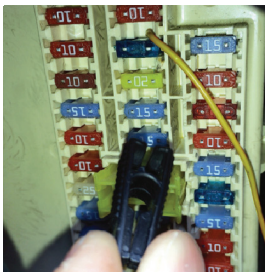
2



Identify a fuse that has no power (e.g. cigarette lighter, audio etc.) to connect with the red ACC wire and insert it back to fuse box.

※ Location of ACC power supply may differ depending on the vehicle.
 ※ Please connect the ACC wire to the output terminal. If wired the other way around, there is a risk of fire.

3



Identify a fuse that has power (e.g. emergency lamp, indoor lamp, tail lamp etc.) to connect with the yellow B+ wire and insert it back to fuse box.

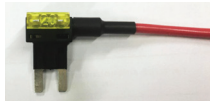
※ Location of B+ may differ depending on the vehicle.
 ※ Please connect the ACC wire to the output terminal. If wired the other way around, there is a risk of fire.

4



Connect the black GND terminal to a grounding source (e.g. metal component)

※



If the power cable is improperly hard-wired, the device will not function properly.

We recommend that users use a dual fuse holder as seen in the adjacent photo to make the process easier.

5. Product Usage

5-1. Basic Operation Guide

1. How to start and stop recording

You can easily set 'power safety function' by manipulating power switches on the device.



- ON : supports recording during driving/parking (operates up to set voltage or time during parking)
 - ACC : supports recording during driving (dash cam begins to operate when the engine is on and it stops operating when engine is off)
 - OFF : power not supplied to the device
- ※ Check if a microSD card is in the device before turning the device on.
※ After the device has successfully started, it will start recording after voice message "Drive safely".

2. Standard Recording Mode

	Continuous Recording	Motion Detection Recording	Event Recording	Emergency Recording
Folder	AlwaysMovie	MotionMovie	EventMovie	EventMovie
Storage Duration	3min	30sec	30sec	30sec
Video	Always	Parking	Event	Event
Characteristics	Records continuously while driving	<ul style="list-style-type: none">- Records when motion is detected if motion detection function is enabled.- Able to set the level of motion detection sensitivity	<ul style="list-style-type: none">- Records when impact is detected during driving or parking- Able to set the level of G-sensor sensitivity	Records whenever you need to by pressing emergency recording button

3. Video Playback

- Check real-time video : APP : When you touch 'Qvia View' icon on Qvia APP, you can check video being recorded. (When Wi-Fi is connected)
- Check recorded video : APP : When you touch 'Internal Storage' icon on Qvia APP, you can check recorded video.
PC : You can see recorded videos using Qvia viewer or other media players by inserting the microSD card to PC.

4. Security LED operation

	During Continuous Recording	During Recording while Parking	Event/Motion taking Place
Front LED Status	Blue LED stays on continuously	Blue LED blinks slowly	Red LED blinks fast
Rear LED Status	Blue LED stays on continuously	Blue LED blinks slowly	Blue LED blinks fast

※ You can set LED to stay on/off on Configuration setting > additional function or APP/Viewer Setting. When LED is off, security LED does not operate.

5. LED screen for GPS Status

Starting with power on button	GPS not received	GPS received	EVENT detected	Switch to Parking Mode
Blue LED stays on continuously	Red LED stays on continuously	Blue LED stays on continuously	LED blinks fast	LED blinks slowly

※ When converting to event or parking mode, the LED will blink in the same color flashed for the previous recording mode.

※ GPS can be turned OFF if manually set up.

6. LED screen for Wi-Fi Status

Starting with power on button	Wi-Fi Off	Wi-Fi On	Wi-Fi connected	EVENT detected	Switch to parking mode
Blue LED stays on continuously	LED OFF	Red LED stays on continuously	Blue LED stays on continuously	LED blinks fast	LED blinks slowly

※ When recording in event or parking mode, the LED will blink in the same color flashed for the previous recording mode.

※ When recording in event or parking mode, the LED screen will stay turned OFF if Wi-Fi is not connected.

※ Wi-Fi will automatically be turned OFF if it has been switched on without being connected to any device for 5 minutes.

7. Recording during driving

– Continuous recording : records and saves videos during driving at 3–minute interval in AlwaysMovie folder

※ "Always" is displayed on the bottom part of the footage when playing back the videos recorded in continuous mode.

– Event recording : recorded for 30 seconds in total – 10 seconds before/20 seconds after impact occurs – and saved in EventMovie folder.

– Emergency recording : when pressing emergency recording button for approx. 1 second, recording starts immediately with a sound, and a 30–second video is saved in EventMovie folder.

※ Emergency recording cannot operate during event recording and vice versa.

8. Recording During Parking

- Parking mode is activated when the device power is ON.
 - ※ Note that recording and the device itself will be turned off if the vehicles' battery drops below a predetermined voltage.
- How to change to parking mode : You can change the setup time to initiate the 'auto-conversion to parking mode' function.
When the device converts to parking mode, a voice guide ("Switched to parking mode") is announced.
 - ※ Automatic conversion to parking mode can be set up in the "Configuration Setting > Basic Functions" of the Qvia viewer or on the Qvia mobile app: "Qvia Setting > Basic Functions".
 - ※ As recording stops and converts to parking or driving mode, less than 5 seconds of video may be lost.
- Recording in parking mode : When playing back the recorded videos in parking mode, it will say "Motion" on the bottom of the footage.
 - ※ When converting from continuous, event, or manual recording mode to parking mode, each recording will be ended and converted into parking mode. For this reason, video loss may occur.
- When selecting 'Use motion detection' in the configuration settings, video will be recorded for 30 seconds in total, consisting of 10 seconds of video before the impact and another 20 seconds following the impact. Files will be saved in the Motion Movie folder.
 - ※ You can set the motion detection function on the Qvia Viewer : "Configuration Setting > Additional" or directly from the Qvia App : "Qvia Setting > Additional".
 - ※ RED LED will blink while motion recording is activated.
 - ※ Motion detection may fail when the surrounding of the vehicle is too dark.
 - ※ Recording time during parking mode may vary depending on the vehicles' battery status.
 - ※ Motion detection or frame omission may occur depending on surrounding environment.
 - ※ Motion recording may continue according to changes in the environment. Therefore, the level of sensitivity must be set in accordance with your parking environment
(E.g. When parking in an alley or underground, frequent movements may interfere with motion recording if the level of sensitivity is too high.).

9. Driving Information Check

- Qvia dash cam can record up to approximately 2 million driving information data onto the microSD card. After you have set the time interval for saving the driving information on the configurations settings, the device will automatically save the data on a regular basis.

■ 5-2. Getting Started with the Qvia App ■

- ※ Download the Qvia application on your smartphone. The Qvia app can be found on the Google Play Store and the App Store for iPhone.
 - The Qvia app can be used with Android 4.0 or later, iOS 5.0 or later.
 - The Qvia app may not be supported depending on the type of the type of smartphone.
- ※ Turn the Wi-Fi button to On located at the bottom of the dash cam.
- ※ For playback of recorded videos using Wi-Fi, the reception may vary according to the data transfer rate.
- ※ The range of Wi-Fi reception may vary.
- ※ The storage path of recorded videos may vary depending on the smartphone.
- ※ Recorded videos will be saved with a bit rate of approx. 3Mbps if connected to Wi-Fi, regardless of configuration setting.

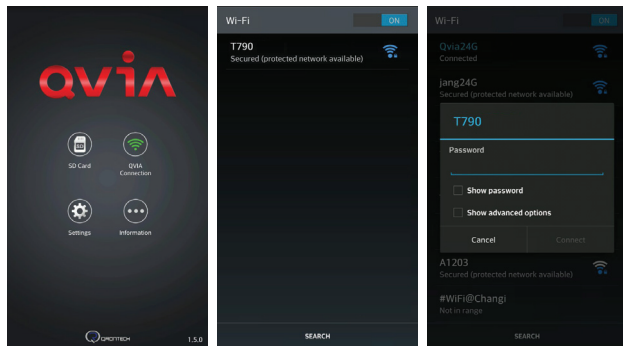


[Download the Qvia App on
Google Play Store]



[Download the Qvia App on
Apple App Store]

■ 5-3. Connecting to the Qvia App ■



[Qvia App main menu]

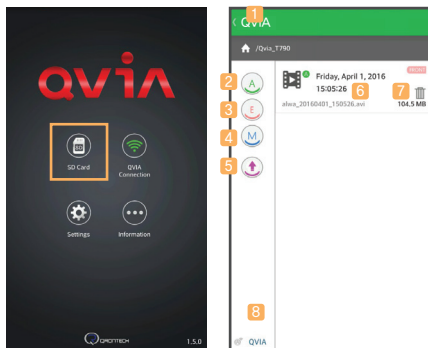
[Connect smartphone with Wi-Fi]

[Enter password]

1. Select the Qvia Connection button on the main screen.
 - ※ When the dash cam is connected with your smartphone, the Qvia Connection icon will turn green.
2. Select 'Qvia' on the Wi-Fi list.
3. Enter in the default password : '11111111'
 - ※ For a stable connection, please remain within close proximity with your dash cam.
 - ※ Change your password to prevent others from accessing your dash cam.
 - ※ You can change the device name and password on the Qvia Viewer program or Qvia app.

■ 5-4-1. How to use the Qvia App – SD Card ■

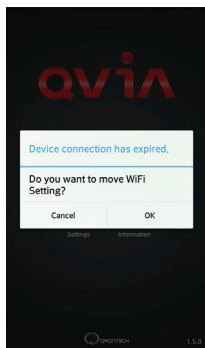
※ You can download and play recorded videos on your smartphone.



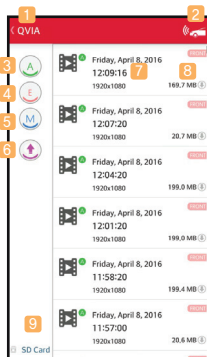
1. Back : Go back to the Main Screen.
2. Always Video : Display videos captured in Always Recording mode.
3. Event Video : Display videos captured in Event Recording mode.
4. Motion Detection Video : Display videos captured in Motion Detection mode.
5. Customize : Arrange the order of videos by time sequence (ascending/descending).
6. Play : View video file.
7. Delete : Delete video file.
8. Wi-Fi : Go to 'Qvia Connection'.

5-12-2. How to use Qvia App – Qvia Connection

※ Connect with your Qvia device to view captured footage. Green indicates a successful connection with the dash cam.



[Disconnect Wi-Fi]

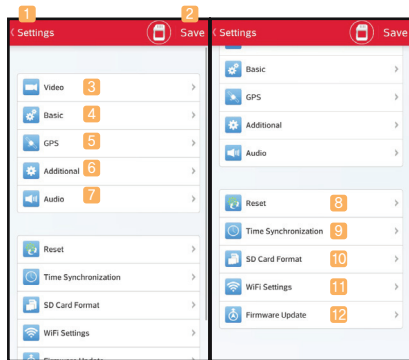


[Wi-Fi Connection]

1. Back : Go back to the Main Screen
2. LIVE : View a live video stream.
3. Always Video : Display videos captured in Always Recording mode.
4. Event Video : Display videos captured in Always Recording mode.
5. Motion Detection Video : Display videos captured in Motion Detection mode.
6. Customize Order : Arrange the order of videos by time sequence (ascending/descending).
7. Play : View video file
8. Download : Save video file onto your Smartphone as a movie clip.
※ File path may vary depending on the type of smartphone and OS
9. SD Card : Go to 'SD Card'.

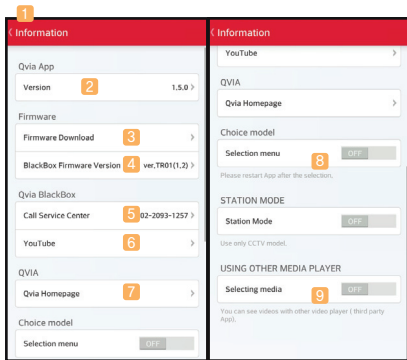
5-4-3. How to use Qvia App – Settings

- ※ Settings only available when the dash cam is connected to your Smartphone.
- ※ Menu items may vary depending on the model of your device.
- ※ Keep the dash cam turned on while saving changed setting data



- 1, Back : Go back to the Main Screen.
- 2, Save Changes : Changes will be saved.
- 3, Video : Go to Video settings menu
- 4, Basic : Go to Basic settings menu.
- 5, GPS : Go to GPS settings menu.
- 6, Additional : Go to Additional settings menu.
- 7, Audio : Go to Audio settings menu.
- 8, Reset : Reset all settings applied to the device to default.
- 9, Time Synchronization : Synchronize time on the device with Smartphone.
- 10, SD Card Format : Format microSD.
- 11, WiFi Settings : Verify changes to the Wi-Fi network of the device.
- 12, Firmware Update : Updates available for your device.

5-4-4. How to use Qvia App – Information



1. Back : Go back to the Main Screen.
2. Application Version : Shows current mobile app version.
3. Firmware Download : Download the latest firmware.
4. Firmware Version : Shows current firmware version of your device.
5. Call Service Center : Contact information of Qvia.
6. YouTube : View Qvia YouTube channel.
7. Qvia Homepage : Visit Qvia homepage for more information.
8. Brand Selection : Choose your dash cam's brand as Lukas or Qvia when starting the Application for the first time
9. Viewer Option : Choose to use different media players for playing downloaded video files.

5-5. How to Upgrade Firmware on Qvia App

1. Connect Qvia application with the device to view current firmware version. ('Information → Dash Cam Firmware version')
2. Go to Firmware Download ('Information → Firmware Download') after disconnecting Wi-Fi on your smartphone.
3. Download the latest firmware available (Charges may apply for data usage).
4. Make sure the device and your smartphone is connected via W-Fi for uploading the downloaded firmware.
5. Upload firmware to the device ('Qvia Configuration → Firmware Update').
6. Please wait until firmware has completely been installed, and the device to restart.
※ Please do not manually restart your smartphone or the device while the firmware is being installed.

5-14. Viewer

1. Program Installation



※ Qvia Viewer can be download the Qvia Viewer at any time from our website (www.qvia1.com).

Recommended PC specifications for using Qvia viewer

OS: Windows XP SP3, Vista (32Bit), WIN 8 (32/64bit)
H/W: Quad core 2.8Ghz/ 4G RAM
Web browser: Microsoft internet explorer 7.0
Direct X version: Direct X9.0 (JUNE2010)
Others: Windows.NET Framework 4

※ For best results, please use the Qvia viewer distributed for your device.
There may be occasional video and sound cuts, as well as changes in play speed and other errors depending on computer specifications.

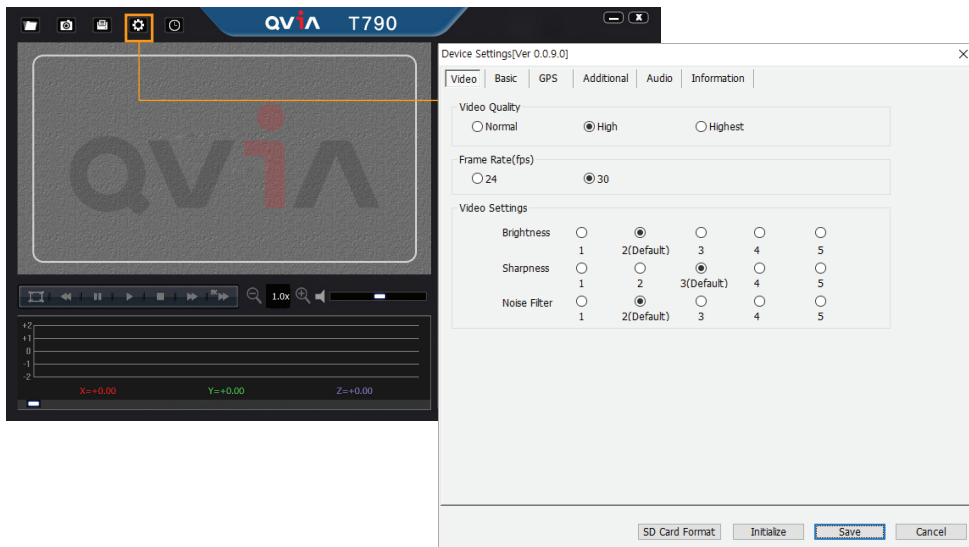
2. Viewer screen composition



- ※ GPS map information may not be displayed if PC is not connected to the Internet or GPS reception is unstable.
- ※ Map synchronization is supported only with Internet Explorer 7.0 or above.
- ※ To take full advantage of Full HD resolution, play video in full screen.
- ※ Viewer image may be different when in sync with OSD II.

3. Settings

- Users can change device settings (i.e. recording configuration, system configuration, additional functions, and time, etc.) to their preferences by altering 'Device Settings' on the Viewer program menu.



4. Video Playback Screen



1

2

3

4

5

6

7

8

- 1 Date & Time
- 2 Driving Speed
- 3 GPS Reception Status
 - A: GPS connected
 - V: GPS NOT connected
 - F: GPS Power NOT supplied
- 4 Mileage
- 5 Dash Cam Voltage Level
- 6 Recording Mode
- 7 Vehicle Plate Number
(able to input enter up to 8digits.)
- 8 Firmware Version

6. Specifications & Customer Service

6-1. Specifications

*Specifications are subject to change without notice for improvement.

Item	Specification	Remark
Camera	Full HD dedicated SONY Exmor CMOS Sensor, 1/2.9(inch)	
Viewing Angle	Diagonal(approx. 135°) Effective angle: Horizontal (approx. 107°), Vertical (approx. 55°)	
Recording resolution & Frame	1920×1080p(Full HD), 30fps	
Wi-Fi	802.11b/g/n (2.4~2.4835 GHz)	
Video Compression	H.264(AVI format) / Codec profile : HiP(High profile)	
Gravity Sensor	Built-in 3-axis Impact sensor(impact, sudden brake, sudden start)	
GPS	Ublox 8	
Storage Media	microSDHC / microSDXC (standard 16G, max. 256G)	
Player Program	General media player / Qvia viewer	
Audio	Built-in speaker, Microphone	
Power & Current consumption	Power: DC 9V~24V, Power consumption: 230mA (13.4V) , approx. 3W	
Low Voltage Cut-off	Able to set time & voltage, supports multi-booting	
Operating & Storage Temperature	Operating : -20°C ~ 70°C(-4°F~158°F), Storage : -30°C ~ 80°C(-22°F~176°F)	
Size/Weight	106 X 62 X 38(mm) , 66g	Including GPS



Quality Assurance

Model Name		Product S/N	
Customer Name		Date of Purchase	MM / DD / YY
Customer Phone No.		Place of Purchase	

1. A standard 1-year warranty is provided from the date of purchase.
However, a six-month warranty is provided for accessories, including memory card.
2. This product has undergone strict quality control and inspection procedures.
3. Be sure to bring this manual with you when you request repair service.
4. This user manual is a proof of purchase and warranty and will not be re-issued. Take extra care keeping the manual safe.
5. We are not responsible for any costs incurred for installing and uninstalling the product, regardless of warranty period.

■ Certified company info. ■



1. Certified company : Qrontech Co., Ltd.
2. Device name (model name) : QVIA Dash Camera(Dash Cam)
(T790)
3. Certificate No. : MSIP-REM-QRN-TWIF
4. Manufacturer/Manufacturing country : Qrontech Co., Ltd. /
Korea

Seller and user must note that this device is electromagnetic wave compatible only for business use, not domestic.



Conformity European Marking
EU Joint Specification Certificate



U.S. Federal Communications
Commission /
Electromagnetic Wave
Compatibility Certificate



